



BMP 430/560

FLEXOGRAPHIC ROTARY PRINTER

BMP 430/560 is a state of the art, high quality flexographic printer for inline printing directly onto your package. It is the perfect solution to all your printing needs, from nutritional facts, scannable bar codes and total product information.

The BMP retrofits onto all horizontal form fill and seal packaging machinery such as Tiromat, Multivac, Hooper, Mahaffey & Harder, Rapid Pak and Dixie.

It is the smallest and fastest unit in the industry. The BMP also offers the lowest cost per impression solution to your printing needs.

Drive + System
eliminates stress
on seals

Prints speeds up
to 35 cycles per
minute

Smallest in
the industry

Retrofits to all
horizontal form fill
and seal packaging
machines

Self cleaning
stainless steel
ink control unit

Quick change
MAG-FLEX print
plate system

Laser engraved
ceramic coated
analog roll

All stainless
ink fountain

Prints on all
substrates

Scannable
bar codes



GREYDON
I N C .

Mag-Flex Print Plates

The BMP printer is equipped with a lightweight PVC print drum which is covered with Stainless steel. This feature allows for the use of our quick plate change using the Photo polymer print plates mounted directly to MAG-FLEX. Plate changes take seconds and require no tools.

Ink Control Unit

All Stainless Steel Ink Cart and Ink Reservoir features a totally enclosed ink recirculatory system that:

- Recirculates and agitates the ink
- Filters the ink sifting out foreign materials
- Reversible heavy duty Parastaltic ink pump allows for easy self cleaning with just the turn of a knob
- Unit is on wheels and fits neatly under the packaging machine and is easily removed for cleaning and service
- Optional viscosity control unit



Drive + System

The Black Max Rotary printer is equipped with our unique variable speed drive which

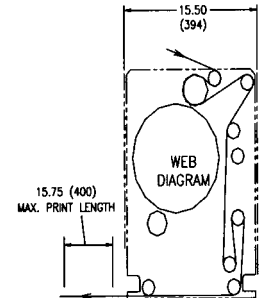
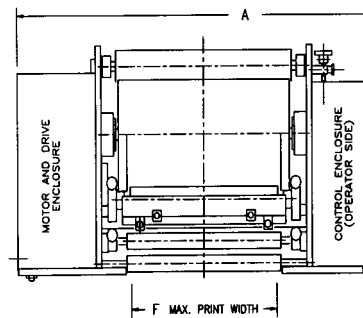
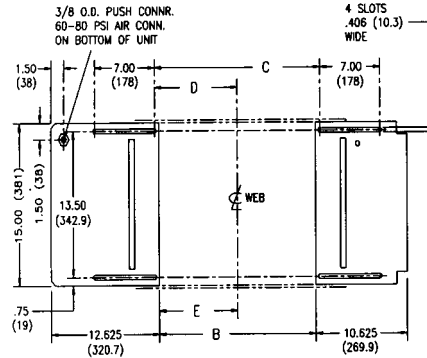
- Matches the web speed
- Eliminates stress on the seals
- Allows for use of any substrate thick or thin

Technical Data

Print technology	Flexographic rotary
Print area across web (430)	430 mm
Print area across web (560)	620 mm
Print area index direction (430)	635 mm
Print area index direction (560)	635 mm
Print speed	Up to 35 cycles per minute
Power	Friction/AC Drive: 220 volts or 380 volts
Compressed air	1 Cu.ft. @ 50 P.S.I.
Signal	Dry contact
Mounting	Machine bed or hood mount and forming web
Weight	250 lbs. approx.

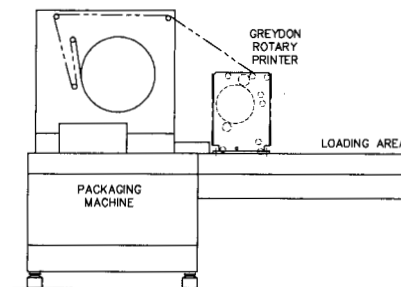
Service and Supplies

Greydon offers a complete line of environmentally safe water based inks in every conceivable color along with cleaner and modifier. Our parts department provides immediate access to a complete inventory of replacement parts and accessories. In addition, our Technical Service Department is always on call to help troubleshoot problems and help deliver fast reliable service.



DIMENSION TABULATION

	Size 430		Size 560		Size 325	
	Inch	mm	Inch	mm	Inch	mm
A	41.63	1057,2	46.63	1184,3	37.63	955,7
B	18.25	463,6	23.25	590,6	14.25	362
C	19.25	489	24.25	616	15.25	387,4
D	9.625	244,5	12.125	308	7.625	193,7
E	9.125	231,8	11.625	295,3	7.125	181
F	17	432	22	559	13	330



391 Greendale Rd.

York, PA 17403

Phone 717.848.3875

Fax 717.843.6435

E-mail
greydoninc@msn.com



GREYDON
I N C.